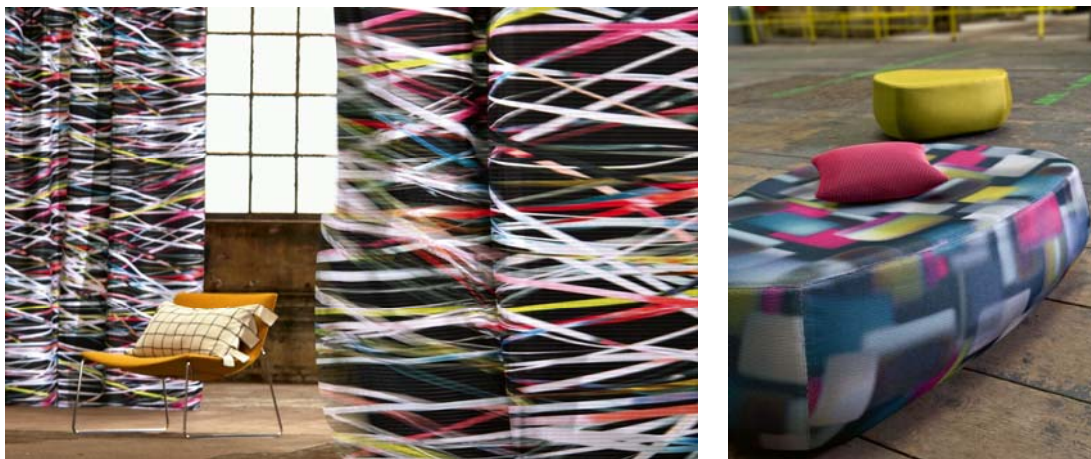


création **baumann**

Interludes with colours and shapes

Highlights from the 2009 collection by Création Baumann

The enchantment of a kaleidoscope or playful interludes with ribbons: The 2009 collection from Création Baumann, the textile enterprise from Langenthal in Switzerland, makes playful and creative restyling of interiors easy. Exceptional print designs along with ultra modern materials and technologies ensure unusual and rare looks, whilst accessories, such as throws and cushions, set contemporary accents.



Playful variations with ribbons are the hallmark of three highly original new products. Narrow ribbons in exuberant colours are dancing across a plisse curtain on “Eplis”. The digital print design on this three dimensional fabric has a trompe l’oeil effect. The look is striking, irrespective of whether it is elegant on a black base or fresh and unconventional on white. Ribbons also determine the character of “Edda” and “Egon”, two elaborate, hand finished accessories. “Edda” an elongated cushion features ribbons of fine wool cloth which have been woven together, whilst contrasting seams and side fringing introduce a jaunty note. The cushion is available in three colours and combines beautifully with “Egon”, a throw which makes a splendid display. Once again plaited ribbons in wool create a strong check pattern with weft side fringing. The throw is available in three fresh, youthful colour combinations.

Three striking curtain fabrics come in the guise of vistas. The inspiration came from photographic wallpaper displays from the seventies. Digital prints on a semi sheer weave create different settings. “Garden” spreads a summery feel with brightly coloured flowers, whilst “Mountain” transposes the onlooker to the mountains – inclusive of skiers. In contrast “City” introduces a note of metropolitan panache. The three designs have photorealistic sections and interludes where pictures have been given a slightly unfamiliar appearance, through blurring or over-layering. “Caleido” and “Scope”, two curtain fabrics are reminiscent of looking through a kaleidoscope. The transfer print designs on a dense weave mesmerise with enthralling colours and overlapping shapes in a delightful array of

création **baumann**

mosaic patterns, rosettes and fine lines. The kaleidoscopic enchantment is available in three colour settings for the home – understated and cool, elegant and dark and trendy with vivid colours.

The collection is supplemented by new products, whose materials and technologies were adopted from other sectors of industry. “Arex” and “Aron”, both double layered upholstery knit fabrics are two such innovations. The soft, flame retardant fabrics captivate with a three dimensional look and elasticity. Their designs have a net like texture which lies akin to a relief across the entire surface. The oval design of “Aron” assumes a classic, understated look, whilst the star design of “Arex” has slightly more impact. “Astra Lux”, the upholstery fabrics evokes the flashing lights of a metropolis. Blurred, overlapping rectangles in bright pink, orange and purple on a dark or silver backdrop conjure up colourful neon display boards, whilst an interspaced knit weave adds a three dimensional quality. Another interspaced knit weave is “Atomic”, a curtain fabric with a double layered net pattern that gives it a slightly hazy appearance.

The 2009 collection of the Création Baumann Line is more than a collection of extravagant designs; it is also an excellent demonstration of how technologies from different sectors are entering the world of textiles. The enterprise showcases again its exceptional expertise in textile engineering. The collection is available from specialist outlets from January 2009.