

REFERENCES / OFFICE / ROOM DIVISION / ACOUSTICS / FLAME-RETARDANT

COLOUR AND ACOUSTIC ROOM SUBDIVISION

Concrete walls, large glass fronts and many people in one room require flexible acoustic and visual separation.



Object

Showroom Création Baumann, Tokyo, Japan

Concept

Création Baumann Japan, Tokyo

Photos

Ichiro Mishima, Tokyo, Japan

STARTING POINT

The upper floor of the Tokyo showroom is a large space used as an office and meeting room. A room used by many employees and equipped with concrete walls and large glass fronts requires a flexible and individually controllable separation, both visually and acoustically.

SOLUTION

To divide the working room from the meeting room, Arno was used as a 4-layer acoustic divider Vario. If required, this can be pulled out and thus offers the desired privacy. In addition, Voile Tinto zones the area and serves as a splash of colour.



REFERENCES / OFFICE / ROOM DIVISION / ACOUSTICS / FLAME-RETARDANT

COLOUR AND ACOUSTIC ROOM SUBDIVISION



USED PRODUCTS

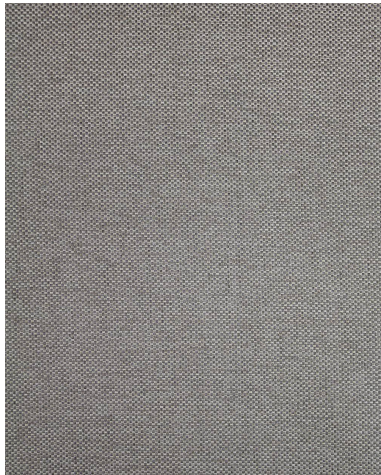
COLOUR AND ACOUSTIC ROOM SUBDIVISION



ACOUSTIC DIVIDER VARIO

ART.-NO. 0101750

Use: Cubicle curtain
Number of colorits: 1
Material: 100% Flameretardant polyester (Trevira CS)



ARNO

ART.-NO. 0101295

Use: Upholstery fabric for contract use
Number of colorits: 34
Material: 100% Flameretardant polyester (Trevira CS)
Fabric width: 140 cm
Weight: 381 g/m²
Sound absorption: Alpha value 0.90



VOILE TINTO

ART.-NO. 0101685

Use: Transparent curtain fabric
Number of colorits: 3
Material: 100% Flameretardant polyester (Trevira CS)
Fabric width: 295 cm
Weight: 51 g/m²



USED PRODUCTS

COLOUR AND ACOUSTIC ROOM SUBDIVISION



SINFONIAACOUSTI ART.-NO. 0101985
C CUBE

Use:	Transparent curtain fabric
Number of colorits:	4
Material:	100% Flameretardant polyester (Trevira CS)
Fabric width:	295 cm
Weight:	105 g/m ²
Sound absorption:	Alpha value 0.60

