

REFERENCES / HOSPITALITY / ACOUSTICS / DIMMING

FIRST CLASS, BY DAY & BY NIGHT

The newly-opened five-star hotel also incorporates premium quality blackout features. Numa curtains lined with the Dimmer blackout material and refined by a border from the Cavallo collection provide optimum light control. Are you curious?



Object

The Alpina Gstaad, Gstaad, Switzerland

Concept

Jaggi & Partner AG, Gstaad / Hirsch
Bedner Associates, London /
Müller-Hirschi AG, Zweisimmen,
Switzerland

Photos

Peter Leuenberger, Bern

INITIAL SITUATION

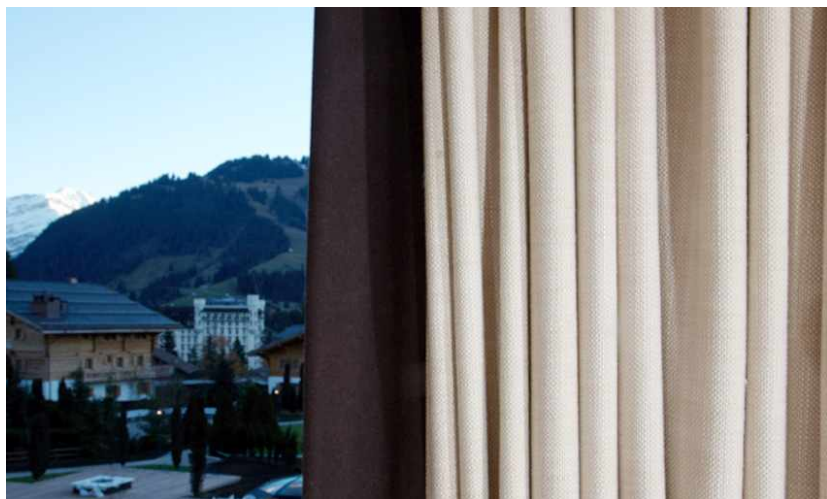
December 2012 brings the opening of the first new five-star hotel in this area. This is the "Alpina Gstaad", which has taken over 100 years to be brought from intention to fruition. The contemporary architecture of the Alpina Gstaad features regional traditions combined with Swiss precision.

SOLUTION

Rustic wood, fine materials, silhouetted balustrades and modern fireplaces lend the 56 rooms, suites and public areas an understated atmosphere, far from any Alpine stereotype. Numa curtains backed by Dimmer blackout drapes are used with a Cavallo border to create the appropriate look. The visible and blackout curtains are both motorised.

REFERENCES / HOSPITALITY / ACOUSTICS / DIMMING

FIRST CLASS, BY DAY & BY NIGHT



USED PRODUCTS

FIRST CLASS, BY DAY & BY NIGHT



DIMMER IV

ART.-NO. 0005400

Use:	Dim-out fabric
Number of colorits:	105
Material:	100% Flameretardant polyester (Trevira CS)
Fabric width:	150 cm
Weight:	260 g/m ²
Sound absorption:	Alpha value 0.60



VIVACE IV

ART.-NO. 0002110

Use:	Transparent curtain fabric
Number of colorits:	2
Material:	77% Polyester / 23% Linen
Fabric width:	300 cm
Weight:	95 g/m ²

