

Dieses Zertifikat ist für folgende Produkte gültig:

This certificate is valid for the following products:

- Sinfonia CS IV
- Sinfonia CS IV - 300
- Sinfonia CS V Color
- Sinfonia CS V Col 1012 / 1013
- Sinfonia CS V mit Bleiband / with weighted hem
- Sinfonia CS V - 330

ACOUSTIC ABSORPTION MEASUREMENT PROTOCOL (ISO 354, ISO 11654)

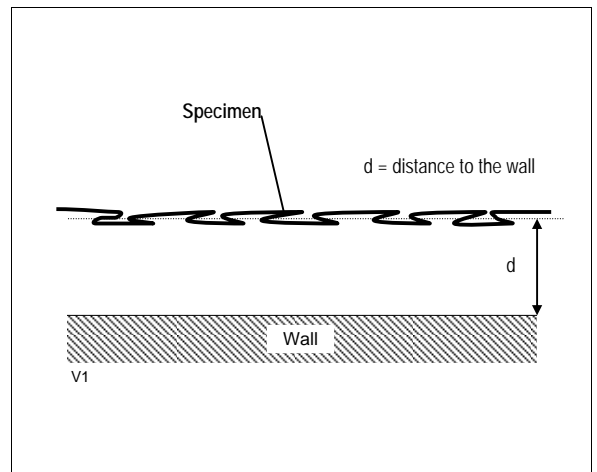
Specifications

Manufacturer	Création Baumann - Weberei und Färberei AG - CH-4901 Langenthal (Switzerland)	
Product name	SINFONIA CS IV	
Remarks, configuration	Decoration fabric, composition 100% PLF Measurement configuration: curtain draped by 100%, distance to the wall d = 15 cm	
Set-up (acc. ISO 354/Amd 1:1997)	Type G-150	No. of measurements 3 each microphone
Probe area	4.50 x 3.00 = 13.50 m ²	No. of used microphone 10
Temperature	20.1 °C	Used acoustic Signal White noise
Relative Humidity	59.8 % r.H.	Empty room measurement Measured values
Volume of the reverberation chamber	214.3 m ³	EEC Order No. 11086
Measurement No. / Date / Time	Nr. 05 / 07.10.2004 / 11h15'	Archive filename SINFO_01.ABS

EUT identification

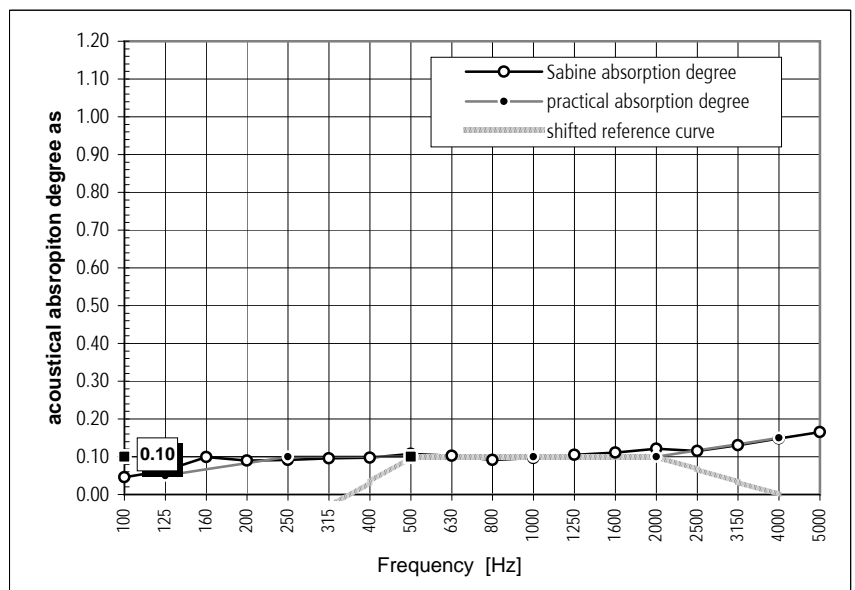


Test set-up



Measurement results (acc. ISO 354, ISO 11654)

Freq. [Hz]	T ₁	T ₂	α _s	α _{pi}	α _w
100	20.49	14.98	0.05	0.05	0.10 Class
125	17.84	12.38	0.06		
160	15.70	9.77	0.10		
200	12.61	8.74	0.09		
250	11.24	8.02	0.09		
315	9.68	7.10	0.10		
400	8.14	6.21	0.10		
500	8.48	6.25	0.11		
630	7.96	6.03	0.10		
800	7.56	5.95	0.09		
1'000	6.95	5.51	0.10		
1'250	6.06	4.85	0.11		
1'600	5.38	4.36	0.11		
2'000	4.78	3.90	0.12		
2'500	4.24	3.56	0.12		
3'150	3.68	3.10	0.13		
4'000	3.06	2.60	0.15		
5'000	2.51	2.16	0.17		



Error : 100 - 315 Hz : 5.09% 400 - 1250 Hz : 4.57% 1600 - 5000 Hz : 3.98%

LEGEND

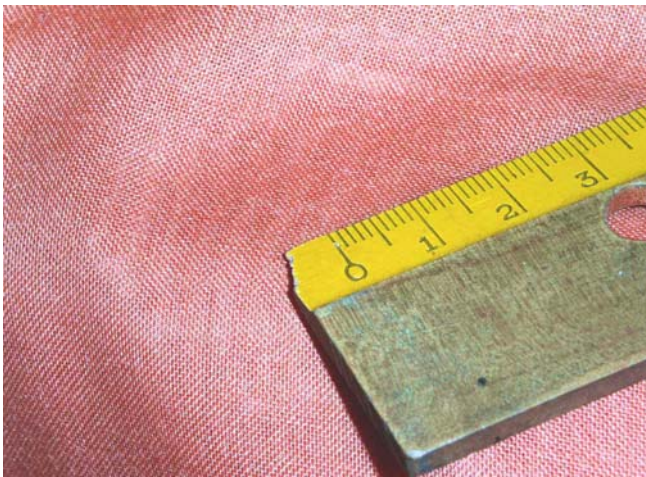
- T₁ = Reverberation time of the empty room
- T₂ = Reverberation time with the test specimen
- α_s = Sabine absorption degree
- α_{pi} = practical absorption degree
- α_w = assessed absorption degree

ACOUSTIC ABSORPTION MEASUREMENT PROTOCOL (ISO 354, ISO 11654)

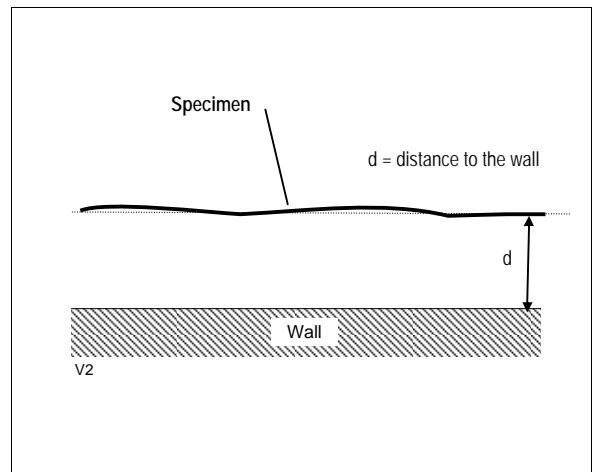
Specifications

Manufacturer	Création Baumann - Weberei und Färberei AG - CH-4901 Langenthal (Switzerland)	
Product name	SINFONIA CS IV	
Remarks, configuration	Decoration fabric, composition 100% PLF Measurement configuration: curtain panels, distance to the wall d = 15 cm	
Set-up (acc. ISO 354/Amd 1:1997)	Type G-150	No. of measurements 3 each microphone
Probe area	4.50 x 3.00 = 13.50 m ²	No. of used microphone 10
Temperature	20.0 °C	Used acoustic Signal White noise
Relative Humidity	60.0 % r.H.	Empty room measurement Measured values
Volume of the reverberation chamber	214.3 m ³	EEC Order No. 11086
Measurement No. / Date / Time	Nr. 06 / 07.10.2004 / 11h50'	Archive filename SINFO_02.ABS

EUT identification

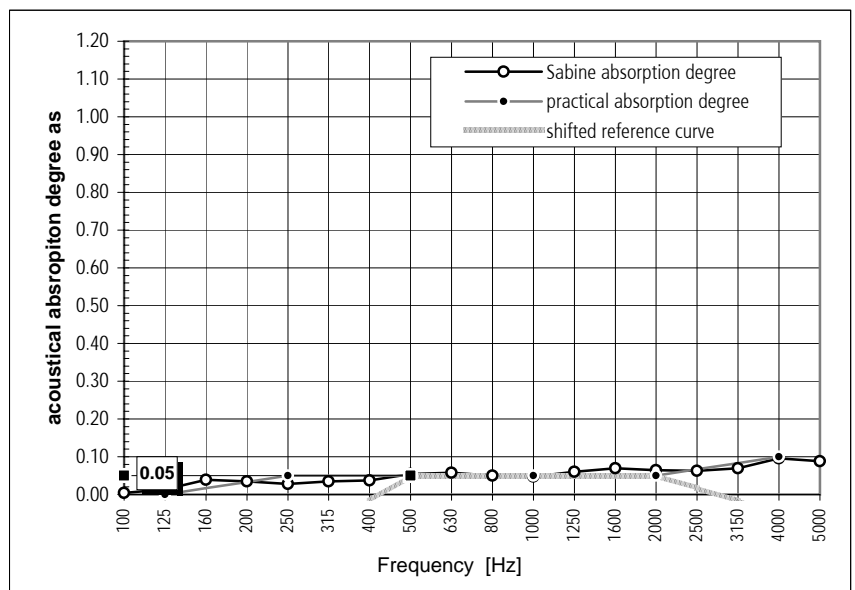


Test set-up



Measurement results (acc. ISO 354, ISO 11654)

Freq. [Hz]	T ₁	T ₂	α _s	α _{pi}	α _w
100	20.23	19.61	0.00	0.00	0.05 Class -
125	17.67	16.12	0.01	0.00	
160	15.83	12.76	0.04	0.00	
200	12.46	10.65	0.03	0.05	
250	11.14	9.93	0.03	0.05	
315	9.57	8.47	0.03	0.05	
400	7.96	7.14	0.04	0.05	
500	8.27	7.04	0.05	0.05	
630	7.83	6.66	0.06	0.05	
800	7.57	6.59	0.05	0.05	
1'000	6.96	6.16	0.05	0.05	
1'250	6.09	5.33	0.06	0.05	
1'600	5.45	4.75	0.07	0.05	
2'000	4.80	4.28	0.06	0.05	
2'500	4.29	3.88	0.06	0.05	
3'150	3.71	3.37	0.07	0.10	
4'000	3.14	2.81	0.10	0.10	
5'000	2.51	2.31	0.09	0.10	



Error : 100 - 315 Hz : 45.58% 400 - 1250 Hz : 10.67% 1600 - 5000 Hz : 6.98%

LEGEND

- T₁ = Reverberation time of the empty room
- T₂ = Reverberation time with the test specimen
- α_s = Sabine absorption degree
- α_{pi} = practical absorption degree
- α_w = assessed absorption degree